

Thank you for using our Joyetech Electronic Cigarette!

All the pictures in this manual are real. Please read the instructions in detail before use to ensure you master the correct use of an electronic cigarette. Note: We do not recommend using Joyetech electronic cigarettes and spare parts with Non Joyetech products. Use of Non Joyetech products may result in decreased effectiveness and shortened lifespan, and will void the Joyetech Warranty.

For all after-sale support, please consult your local Joyetech agent.



Preface

eGo-C is the third generation of ever popular products eGo, eGo-T. It will be the milestone in the industry of electronic cigarette, which leads to simpler and more economical development. We believe this concept will be the future of the electronic cigarette industry. The electronic cigarette is a new type of personal technology. It is not like mobile phones or computers containing a culmination of technologies with a defined and easily measured purpose, nor is it like an air conditioner or refrigerator whose advantages or disadvantages can be determined by the cooling of a particular area. The quality and usefulness of our product is affected by each user's particular habits and idiosyncrasies and judged on a very individual level in the personal response of our mouth, throat, and body. Therefore, we are testing and experiencing our products in person each day and feeling if it is satisfied. Meanwhile, we are constantly making some bold and more subtle changes and we test for the delicate results each change brings, but the feeling is not unilateral. We consider it our responsibility and challenge to pursue this somewhat elusive feeling, and we strive to achieve a level that would be the same as the quenching of a great thirst with pure water. In addition to this standard, it is our goal to make our product simple and easy to use, so that it is as convenient as smoking a cigarette. It is our hope that our efforts serve to do nothing less than enrich your life.

Joyetech President and CEO: *Frank Chen*

1. Product Introduction

Product Introduction	3
Optional Accessories	7
Universal accessories	11
Introduction to use	12
Atomizer	14
Battery	17
P C C	20
Liquid	22
Filling the tank cartridges	24
Quality warranty	26

Joyetech electronic cigarette is a new conceptual alternative to cigarettes. Basically, the output of the battery, controlled by intelligent integrated circuits, applies power to heating components, which, in turn, heat the liquid to produce an atomization effect. The battery and atomizer components can be repeatedly used. The main components of the eliquid used by Joyetech are food grade flavoring and fragrance.

1.1 standard configuration:

- 2 x eGo-C atomizer body
- 5 x eGo-C atomizer head
- 5 x eGo-C cartridge (same as eGo-T)
- 2 x eGo-C battery
- 1 x eGo-C wall charger
- 1 x eGo-C USB parts (same as eGo, eGo-T)
- 1 x eGo-C pouch (same as eGo, eGo-T)
- 1 x eGo-C user manual

1.2 Kits Standard Accessories

Joye eGo-C 650 battery

Capacity of battery: 650mAh
Constant voltage output: 3.3V
Power display function, Switch button protection and better battery protection than the previous eGo series.

Joye eGo-C atomizer body

An atomizer body is consisted of one atomizer base and one atomizer cover.

Joye eGo-C atomizer head

Universal, easy replaceable atomizer head, the core part of the replaceable atomizer.

Joye eGo-C cartridge

Same as eGo-T A type tank cartridge can hold 1.0ml liquid

Joye eGo-C wall adapter

(same as eGo, eGo-T)
input: 100-240V 50/60Hz, 100mA
output: 5V, 500mA

Joye eGo-C USB charger

(same as eGo, eGo-T)
Input: 5V, 500mA
Output: 4.2V, 420mA

2. Optional Accessories

Besides the standard configuration, Joyetech offers optional accessories that will provide enhanced functionality of your electronic cigarette. Unlike the components that come with the standard configuration, optional accessories are not required for proper function. As there is a wide range of options, please read the instructions or contact your supplier to prevent incompatibility situations.

Joye eGo-C pouch

The following are the accessories of Joye eGo-C Cloth case for convenient carrying of your e cig and parts.

Joye eGo-C battery

Capacity: 900mAh, 1000mAh
Constant voltage output: 3.3V
Power display function, Switch button protection Lithium battery protection

Joye eGo PCC

For convenient carrying and charging of product while you are out. You can carry 1 bottle 10ml liquid, 2pcs eGo-C cartridges, 1pcs e-cigarette and 1pcs eGo-C battery. Customers can carry product according to their needs and you can charge your eGo-C when it is out of battery while you are out. The parameters to charge eGo-C battery: 4.2V/200 mA. The parameters to charge PCC: 5V/500mA.

Joye eGo-C USB battery

Capacity: 650mAh, 900mAh, 1000mAh
Constant voltage output: 3.3V
Power display function and low voltage shutdown protection (eGo USB battery doesn't have this function) Switch button protection, lithium battery protection Charging voltage of the USB end: 5V, connecting to the computer or wall adapter through the USB cable. You can use the battery while charging.

USB cable

Used for eGo-C USB battery, to be connected to computer or wall adapter.

3 Universal accessories of eGo-C with eGo series:

If you buy the previous Joyetech eGo or eGo-T, you can assemble your e cig according to your need based on the following attached chart:

	eGo	eGo-T
A type atomizer	√	√
B type atomizer	√	√
All eGo battery series	√	√
USB part	√	√
Wall charger	√	√
cartridge	×	√
PCC	√	√
Carrying Case	√	√

4. Introduction to use:

4.1 How to assemble atomizer head and atomizer body. Insert the atomizer head to the atomizer base and screw the base and cover to assemble the atomizer. Please refer to picture.

4.2 Assemble the battery and atomizer. Please refer to picture. Screw the battery and atomizer on the thread together to assemble.

4.3 Assemble the cartridge: As seen in picture, push the cartridge straight onto the atomizer. When it is 3mm from the bottom of the atomizer, push harder and when you feel the tank/cartridge is punctured, then spin 30° to 60°, this insures the tank/cartridge is in the correct place.

4.4 Unlock the battery (eGo battery does not have this function): The Joye eGo-C/eGo-T battery is locked when shipped to customers. You need to press the button 5 times within 1.5 seconds. The led on the button will flash 3 times indicating the battery mode has been unlocked.

4.5 Use: Inhale the tank/cartridge while pressing the button on the battery. Do not release the button until your mouth leaves the cartridge. By doing so, you have finished the first step.

4.6 Locking the battery (eGo battery does not have this function): When your electronic cigarette is not in use, you can press the button 5 times within 1.5 seconds to lock the battery. Press the button 5 times within 1.5 seconds again to unlock when you wish to use the electronic cigarette again.

5. Atomizer features and replacement

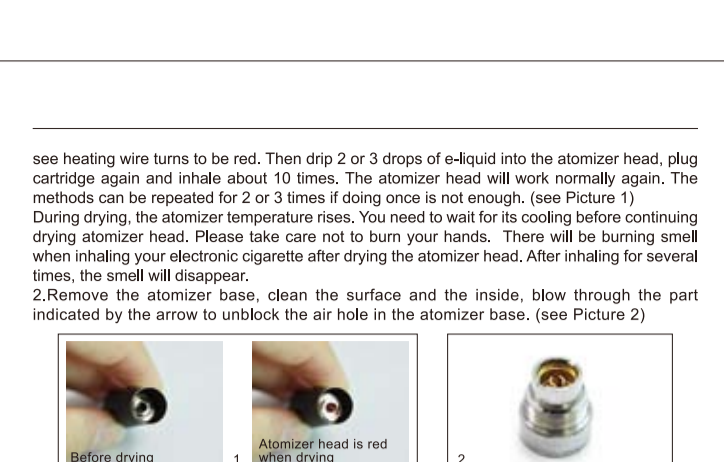
5.1 Joyetech eGo-C atomizer is a new replaceable atomizer. It is consisted of atomizer head, atomizer cover and atomizer base. It is different from other electronic cigarettes. If the atomizer is broken, you only need change the atomizer head. It is the highlight of this product: economical and practical.

5.2 The Atomizer uses heat to atomize the liquid. The normal working temperature is 200°C. The liquid in the tank/cartridges reaches the heating device with assistance from inhale pressure. The heat generated by energizing the heating coil and turns that liquid to vapor. If there is more liquid flowing into the atomizer than can be heated to vapor, it will lead to slight leakage, if there is not enough liquid in the atomizer, then it will have a slight burn taste. These are normal conditions, because people have different smoking habits.

5.3 eGo-C Carbonized Atomizer Head maintenance

If you feel the smoke is small and inhaling is hard after the atomizer head is used for a period of time, you should maintain as follows:

1. Unplug the cartridge and inhale directly at atomizer till there's little burning smell. Then keep pressing the battery button to dry the atomizer head until the liquid inside dry out and you will see heating wire turns to be red. Then drip 2 or 3 drops of e-liquid into the atomizer head, plug cartridge again and inhale about 10 times. The atomizer head will work normally again. The methods can be repeated for 2 or 3 times if doing once is not enough, (see Picture 1) During drying, the atomizer temperature rises. You need to wait for its cooling before continuing drying atomizer head. Please take care not to burn your hands. There will be burning smell when inhaling your electronic cigarette after drying the atomizer head. After inhaling for several times, the smell will disappear.
2. Remove the atomizer base, clean the surface and the inside, blow through the part indicated by the arrow to unblock the air hole in the atomizer base. (see Picture 2)



5.4 After using the atomizer for a period of time, there will be accumulation on the internal components due to carbonization and impurities. At this point the average vapor will lessen or you need to inhale harder and it means you need to change atomizer head. If the atomizer head isn't used for a long time, please remove it, or the atomizer head will stick to the thread when liquid is dried.

5.5 Method of replacing the atomizer head (Please refer to picture):

- (1) Unscrew the atomizer base with your hand.
- (2) Take out the old atomizer head.
- (3) Assemble the new atomizer head.
- (4) Screw the atomizer cover.

6. Introduction of battery

6.1 Basic performance of lithium battery: To extend the battery life, please do not subject it to hot or humid environments. Do not throw or squeeze the battery and avoid contact with sharp objects.

6.2 Special features of Joye eGo-C battery: The Joye eGo-C battery is a new power display battery. When the battery power is over 50%, the battery LED is white; When the battery power is between 10% and 50%, the battery LED is blue; When the battery power is below 10%, the battery LED is red. It has a constant output of 3.3V and has safety protection. It has strengthened short circuit protection and over discharge protection based on eGo-T batteries and there is a device inside to prevent overcharging. When the battery is fully charged, charging will stop automatically. It usually takes 3-4 hours to fully charge (the charging time differs according to the battery). When output short circuit happens, the protection device will disconnect the power supply

automatically and the battery will be locked. The battery will be unlocked and continue to work when charged again.

6.3 Power off: If the LED starts flashing 40 times while you are using the electronic cigarette, the battery will shut down and it indicates that the battery needs to be charged.

6.4 Charging the Joye eGo-C 650,900,1000mAh battery: To charge the battery, screw the threaded side of the battery to the USB charger and then connect the USB port to the wall adapter or the computer. The LED light on the button will flash 5 times then go out, and the LED on the USB charger will turn red, indicating the battery is charging. When the LED light on the charger turns green, it means the charge is finished.

6.5 Charging Joye eGo-C USB battery: Charging is the same as charging the eGo-C battery, but additionally, you can charge through the USB port located in the end of the battery. Connect one side of the USB cable to the USB port in the battery, and the other side to the computer or wall adapter (seen as in picture), the USB port will turn red, indicating the battery is charging. When the red light goes out, the charge is complete. This charging method allows you to be able to use the electronic cigarette while charging. This battery has the low voltage lock function, so it will be locked when the battery voltage is lower than 3.3V. You need to charge for a while to unlock the battery for continuous use.

7. PCC

7.1 There is a chargeable 2000mAh lithium battery in our Joye eGo PCC. The external charging interface is a standard Mini USB port, which is very common. The PCC can hold 1pcs electronic cigarette without cartridge, 1pcs eGo battery, 1bottle 10ml liquid and 2pcs eGo cartridges. There is an LED indicator light by the USB port.

7.2 Charging the Joye eGo PCC: When the PCC is charged with an external adapter (output is a USB interface) or USB interface in the computer, the input voltage is 5V. The LED light is red when it is charging and will turn green when the charge is finished. Disconnect from the external adapter or computer and the light will go out. In theory, a fully charged PCC can charge a 650mAh battery 3 times before the PCC requires a recharge.

7.3 Indication of low power: When the voltage of the internal battery is less than 3.3V,

the indicator light will be red, indicating the PCC needs to be charged. At this time, the PCC will stop charging the battery automatically.

7.4 Charging the eGo battery with the Joye eGo PCC: To charge a battery, screw the battery to the charging port. The battery will flash rapidly 5 times and then go out. This means charging has begun. It usually takes about 3 hours to charge the 650mAh battery.

8. Liquid

8.1 The liquid bottle of Joyetech has a child resistant screw-press cap. Please refer to the picture to open the cap.

8.2 Liquid warning

- Nicotine can be toxic by inhalation, in contact with skin, and if ingested.
- Nicotine is classified as Harmful. Danger of serious damage to health with prolonged exposure, if ingested
- Nicotine is irritating to eyes and skin
- Nicotine may cause sensitisation by prolonged skin contact
- Nicotine may cause harm to the unborn child
- Nicotine vapours may induce drowsiness or dizziness

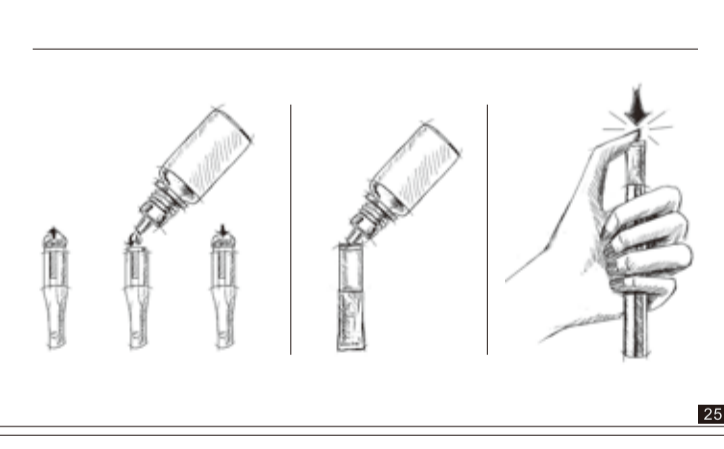
- Nicotine is classified as Very Toxic to aquatic organisms, and may cause long-term adverse effects to the aquatic environment
- In case of an accident, or if you feel unwell, seek medical advice (show the label where possible)
- This material and its container must be disposed of in a safe manner and in accordance with local waste disposal regulations
- Use appropriate containment measures to avoid possible environmental contamination
- To avoid risks to man and the environment, comply with the instructions for use.
- Keep your electronic cigarette locked away when not in use
- If any contents are swallowed, seek immediate medical advice and show this leaflet
- Nicotine in its pure form is a poison and can cause serious harm
- All nicotine-containing fluids must be kept in a safe place and away from children at all times

9. Filling the tank/cartridges with liquid

Joye eGo-C cartridges are same as eGo-T A type cartridges. We have empty tank/cartridges and they are transparent. This allows you to see the liquid when you fill. There are 2 ways to fill with liquid (refer to the picture), and please ensure you use the liquid from Joyetech:

- 9.1 Open the bottom cap and fill the liquid as the picture shows. Please do not fill the cartridge full, and it is better to leave 1-2mm space.
- 9.2 Fill the liquid through the small hole on the bottom cap, refer to the picture. Please ensure the tip is completely in the tank. Squeeze the bottle to let liquid flow into the tank/cartridge, and leave 1-2mm empty space.

Attention: When you feel a continuous burning taste, it indicates that you need to add liquid. Empty tank/cartridges are consumable, please replace the cartridge frequently to ensure proper function.



10. Quality warranty

The warranty of Joye eGo-C is 6 months from receipt of our product. We are not responsible for the defects caused by human error.

LIMITED MANUFACTURER'S WARRANTY

This Joyetech product may be covered by Joyetech's limited manufacturer's warranty. Subject to certain terms and conditions, Joyetech warrants its products against defects in materials and workmanship under normal use for a period of six (6) months from the date of delivery of the products to the authorized Joyetech distributor.

Distributors and resellers are not authorized to make any modifications, extensions, or additions to Joyetech's limited manufacturer's warranty, except as are undertaken at the distributor or reseller's sole expense and liability. If you believe that your Joyetech product is defective, you must contact your authorized Joyetech distributor or reseller to determine whether the product is covered by Joyetech's limited manufacturer's warranty and to obtain warranty service. If the product is covered by the warranty, Joyetech will either: (1) repair the defective product at no charge, using new parts or refurbished parts that are equivalent to new in performance and reliability; or (2) exchange the product with a product that is new or refurbished that is equivalent to new in performance and reliability and is functionally equivalent to the original product. A replacement product or part assumes the remaining warranty of the original product.

For your information, Joyetech's limited product warranty does not apply to: (i) consumable parts and products, including, but not limited to, cartridges, atomizers, and liquid nicotine solutions; (ii) cosmetic damage, including, but not limited to, scratches, dents, and broken plastic; (iii) damage caused by use with non-Joyetech products; (iv) damage caused by accident, abuse, misuse, contact or immersion in liquids, fire, or other external cause; (v) damage caused by operating the product outside the permitted or intended use described by Joyetech or from failure to follow Joyetech's instructions for use; (vi) damage caused by service performed by any party other than Joyetech; (vii) a product or part that has been modified; and (viii) defects caused by normal wear and tear or otherwise due to the normal aging of the product.

THE LIMITED MANUFACTURER'S WARRANTY AND THE REMEDIES SET FORTH ABOVE ARE EXCLUSIVE AND IN LIEU OF ALL OTHER WARRANTIES, REMEDIES, AND CONDITIONS.

WHETHER ORAL, WRITTEN, STATUTORY, EXPRESS, OR IMPLIED, JOYETECH MAKES NO ADDITIONAL WARRANTIES, INCLUDING IMPLIED WARRANTIES OF MERCHANTABILITY OR FITNESS FOR A PARTICULAR PURPOSE, WHICH ARE HEREBY EXPRESSLY DISCLAIMED. EXCEPT AS PROVIDED IN THIS LIMITED WARRANTY, JOYETECH IS NOT RESPONSIBLE FOR DIRECT, SPECIAL, INCIDENTAL, OR CONSEQUENTIAL DAMAGES RESULTING FROM ANY BREACH OF WARRANTY OR CONDITION, OR UNDER ANY OTHER LEGAL THEORY, OR ANY INDIRECT OR CONSEQUENTIAL LOSS OR DAMAGE HOWSOEVER CAUSED. If any term of Joyetech's limited manufacturer's warranty is held to be illegal or unenforceable, the legality or enforceability of the remaining terms shall not be affected or impaired.

Joyetech is not responsible for any other or additional warranties that may be offered to you by your authorized Joyetech distributor or reseller of Joyetech-brand products.